



Linking tradition and innovation –
for over 50 years.



We are a strong **partner** for your business.

The name Kesseböhmer stands for innovative solutions and a powerful blend of design, function and quality. Today the Kesseböhmer group is still owned and managed by the current generation of the founding family.

Our core competence is in metal processing. We work with wire, flat band and tubing and our products are finished in our in-house electroplating and powder-coating facilities. Strong customer orientation has helped us to achieve and maintain our position as the leading supplier of functional fittings for kitchen units.



We supply elegant, high quality solutions for brilliantly organised kitchen storage. Our solutions help end users to make best use of available space and to streamline work processes. These benefits are strong selling points for kitchens. In addition, kitchen manufacturers and kitchen fitters profit from the simplified assembly and easy adjustment of our pull-outs and other fittings. Many of our products are assembled without tools using snap-on connections. It saves time and ensures that the end result meets the highest standards.

Kesseböhmer has a high level of vertical integration, with all production processes in-house. We also engineer and build key elements of our production machinery and tooling. This strategy cuts development time from a new idea to a quality product:

Functions that delight. Designs that impress.

Quality that sets standards.

ARENA Classic/Style/Vario, metal baskets **Page 0-6**

From classic to contemporary –
versatile tray and basket variants.



ARENA Plus anti-slip finish **Page 0-12**

Welcome to the quiet kitchen.



SoftStopp / SoftStopp Plus **Page 0-14**

Gentle deceleration
and noiseless closing



TouchControl **Page 0-16**

Tap once and the cupboard opens!



Synchromatic **Page 0-18**

The new standard for perfect closing
in a busy kitchen



ClickFixx **Page 0-20**

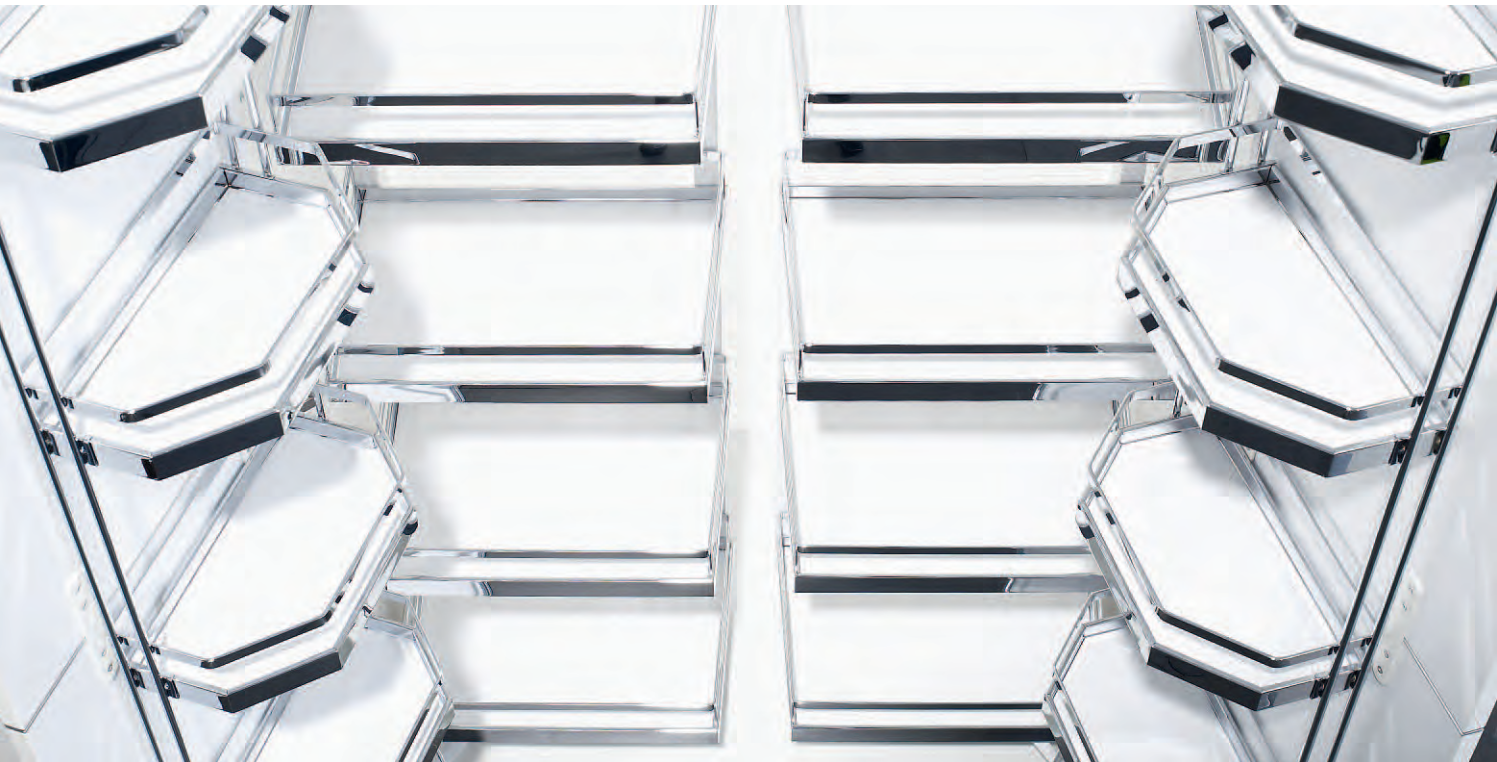
Making assembly faster
and simpler.



KESSEBÖHMER



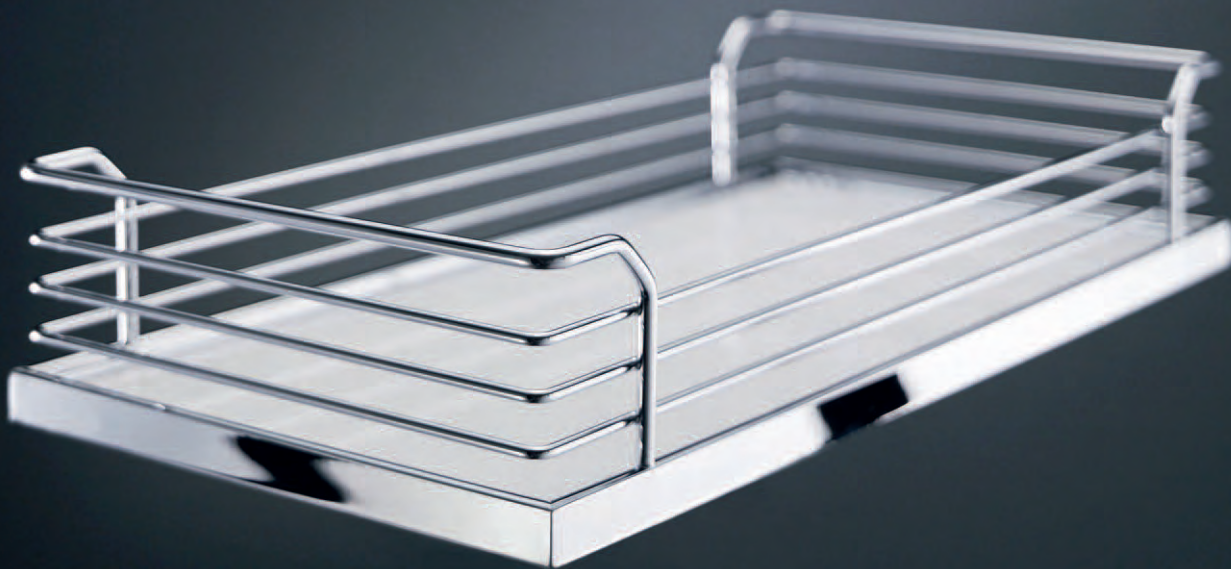
reddot design award



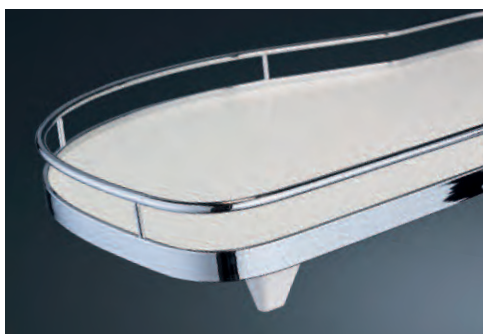
**From classic
to contemporary –
versatile tray variants.**

People choosing a new kitchen set a high priority on attractive design – also for the interior fittings – as an important purchase criterion. This means that function and optics should blend in a homogenous whole, the interior fittings must harmonise with the overall kitchen design.

Our design variants ARENA Classic and ARENA Style, metal trays/baskets are used throughout – in larder pull-outs, and in corner, base and wall units. Then there's ARENA Vario, developed especially to provide a wider choice of contemporary designs for larder pull-outs. All ARENA variants combine optimal functionality and elegant optics with maximum space utilisation – thanks to the railing being attached to the outer edge of the tray.



ARENA Classic –
classic design for contemporary kitchens.

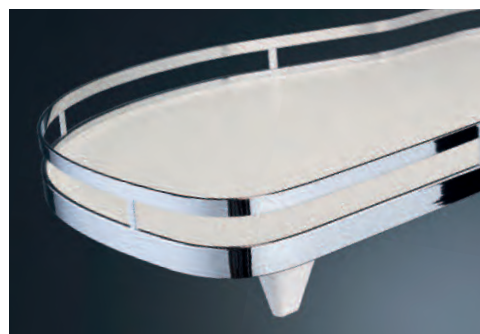


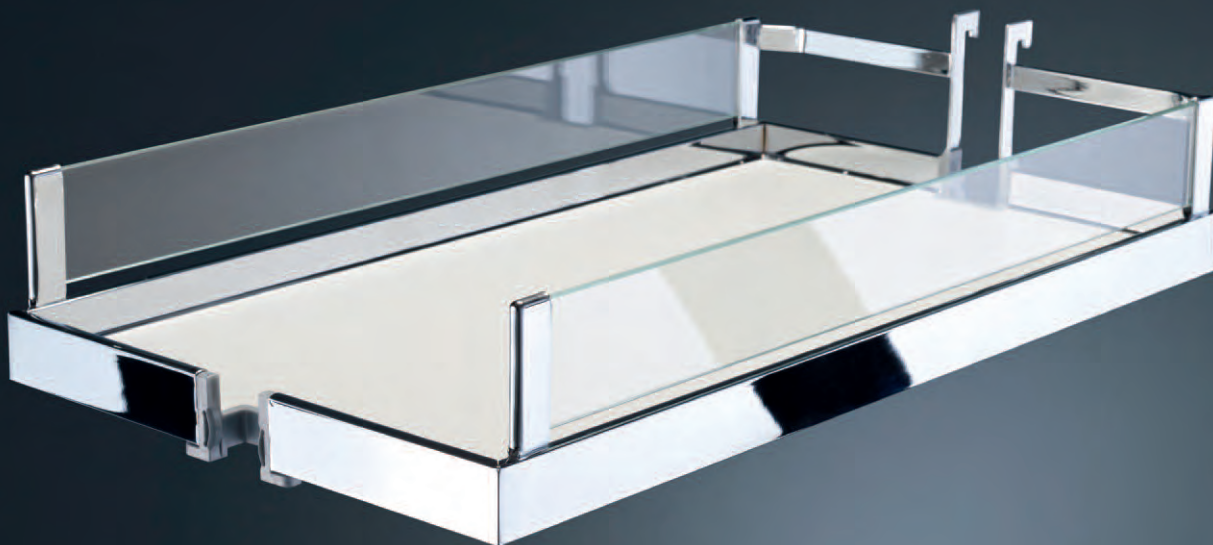
The shapes and the material of ARENA Classic trays instantly communicate style and quality, enhancing the value message of the whole kitchen. The elegant railing is bonded seamlessly with the wood bottom panel and sets off both round and rectangular trays to perfection. With the railing encircling the extreme outer edge of the tray, the entire tray is available for storage and no space is wasted.



ARENA Style –
fine design and perfect workmanship.

This contemporary design features a streamlined railing, made of chrome-plated metal bands, that fits the bottom panel. The clear, straight lines make a striking impression, whenever a kitchen unit is opened, and harmonise perfectly, especially with ultra-modern kitchens. International recognition, for example the red dot design award, underline the outstanding design.

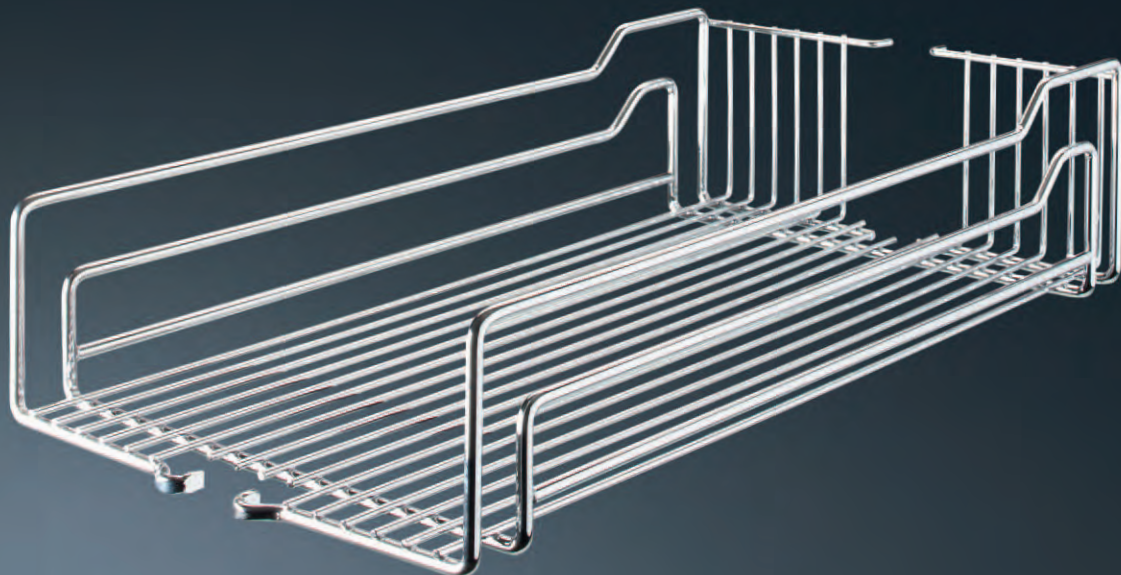




ARENA Vario –
more choice than ever before!



The new freedom! Vario is based on the design of the ARENA trays and was developed specifically for DISPENSA. Attractive connectors on the long sides of each tray offer the choice of combining different railing variants with ARENA Style trays in a range of designs. In this way, it's possible to offer customers a huge choice of variants featuring exclusive designs.



Metal baskets – sturdy, see-through storage.

Kesseböhmer metal baskets still count among the true design classics. They have two big advantages – they're robust, and basket contents are clearly visible.

In-house electroplating or powder coating gives the metal baskets a surface finish that communicates incomparable Kesseböhmer processing quality.







ARENA Plus anti-slip finish – welcome to the quiet kitchen.

Kesseböhmer developed the special ARENA Plus coating which prevents pots and pans, crockery and groceries slipping and sliding when a pull-out is opened or a carousel turned. All ARENA trays can be supplied with the optional anti-slip coating.

ARENAplus



SoftStopp & SoftStopp Plus – gentle deceleration and noiseless closing.

SoftStopp & SoftStopp Plus is the best combination as a high-performance damping system for cabinets designed to take high loads.





TouchControl –
tap once
and the cupboard opens!

It's simple. A gentle tap anywhere on the front panel – and the DISPENSA larder unit opens automatically. Just a quick knock triggers the drive that slides the DISPENSA pull-out gently and silently out of the cabinet. Reliable opening is guaranteed and unplanned opening effectively prevented.



Electric opening for larder cabinets.



Installation is fast and easy. The TouchControl sensor is simply snapped onto the pull-out runner and the compact electric motor fixed in position. The only other modification is a hole for the power cable in the cabinet bottom panel.

Even fully loaded, DISPENSA always glides smoothly out of the cabinet. The motor thrust adapts to the different loads. When front panels have a handle for manual opening, the electric motor supports the opening movement.

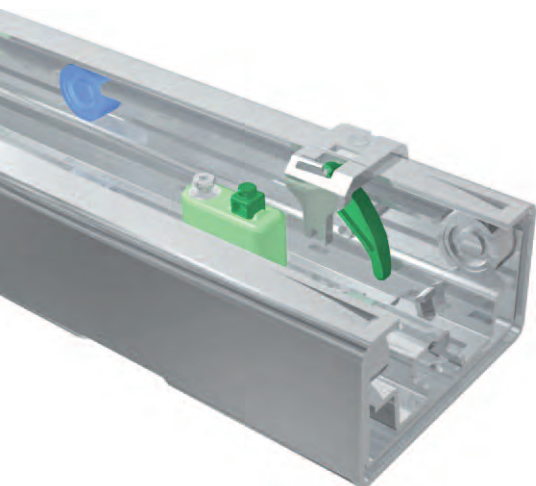
The thrust
adapts to the load



The sensor prevents
accidental opening



Synchromatic – the new standard
for perfect closing in a busy kitchen.



This innovative synchronization system makes sure that the segments of the runner always automatically line up in “zero” position – regardless of whether the pull-out is opened fully or partially. Closing will always be optimal.



Your **benefits**
in brief:

- more flexibility and ease-of-use
in the kitchen
- the only larder pull-out with
Synchromatic



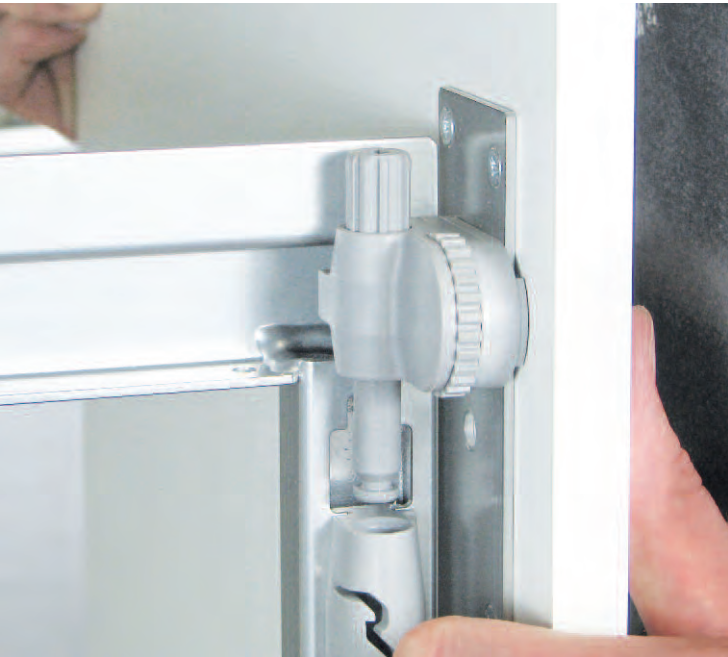
FUNCTION AND OPERATION



ClickFixx for DISPENSA



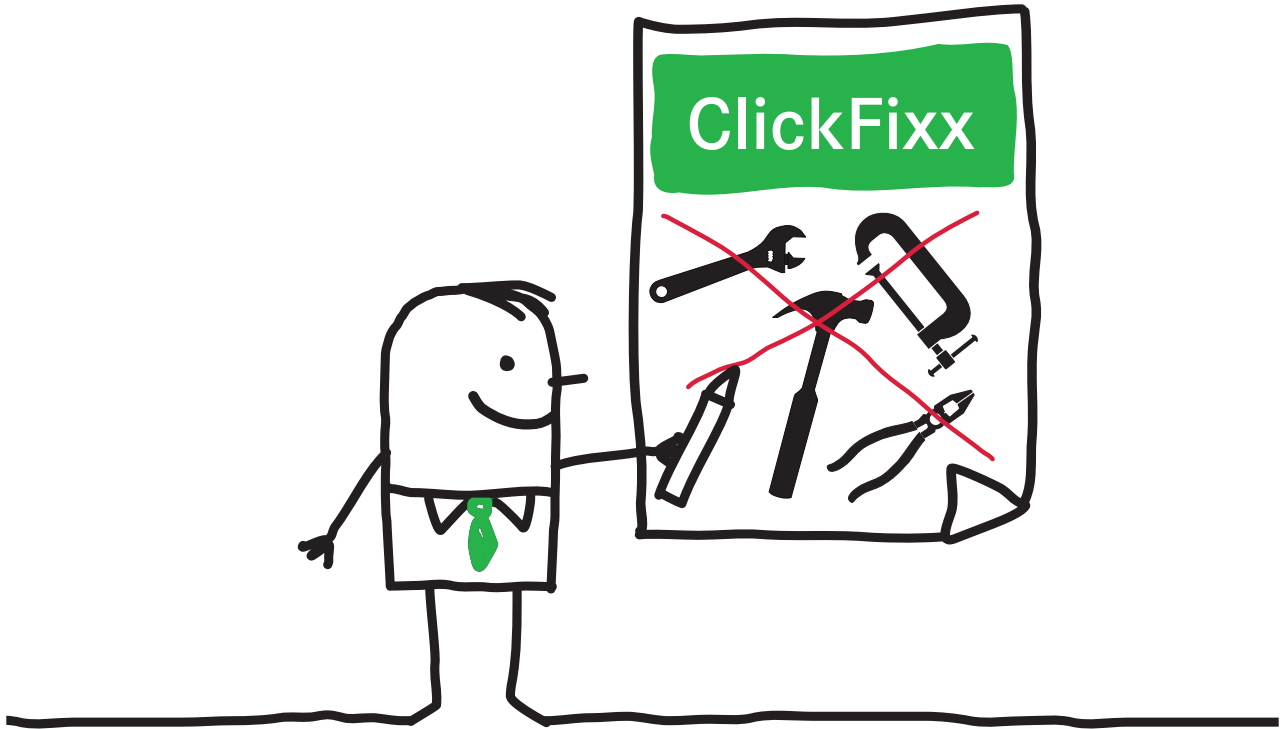
ClickFixx for EWIVA



ClickFixx for MagicCorner



ClickFixx for REVO 90°



ClickFixx: Making assembly faster and simpler.

It's simple and fast. The new ClickFixx system for DISPENSA, REVO, EWIVA and MagicCorner cuts assembly time and guarantees a high standard. Both the front panel and the support frame connector are clipped on in a rapid, toolless process! And then all it takes is a screwdriver for gap adjustment.



